



# LIFE SCIENCES

Providing Solutions, Delivering Results.



**Building  
Group**

It's All About People.

# WHAT SETS US APART

- ▶ Safety Culture
- ▶ Experienced | Dedicated Professionals
- ▶ Industry-Specific Expertise
- ▶ On-Time | On-Budget Results
- ▶ Virtual Design + Construction Technologies Driving Economies and Speed
- ▶ Repeat Client Relationships
- ▶ Superior Sustainability

**\$3 billion**  
in projects for  
Life Sciences clients,  
including  
Biotech, Pharma, and  
Cell + Gene Therapy



FUJIFILM Diosynth Biotechnologies USA  
Research Triangle Park, NC

## MISSION

To safely build complex projects anywhere and develop lasting relationships with our customers by consistently exceeding expectations.

## VISION

To be the best construction services provider in every market we serve and create a legacy of excellence for our people.

## GUIDING PRINCIPLES

- ▶ Innovation
- ▶ Extreme Customer Service
- ▶ Operational Excellence

## CORE VALUES

- ▶ Integrity
- ▶ Teamwork
- ▶ Respect
- ▶ Discipline
- ▶ Accountability
- ▶ Social Responsibility



## SERVICES

- ▶ Integrated Project Delivery
- ▶ Design-Build | Design-Assist
- ▶ Construction Management
- ▶ Preconstruction

## WHO WE ARE

Award-Winning Facilities Recognized by *Engineering News-Record (ENR)* and Associated Builders & Contractors (ABC)

---

Proven Relationships with Leading Life Sciences Developers and Designers

---

Top ABC "STEP" Award Recipient  
Outstanding Safety Program  
2006 – Present

---

Dedicated to Sustainable Construction  
More Than \$3 Billion in LEED and Green Globes Projects  
Platinum, Gold, Silver, and Certified

# SPECIALIZED EXPERTISE



Seqirus  
Holly Springs, NC



Invitae  
Morrisville, NC



**Monsanto Company**  
Research Triangle Park, NC



**Medicago**  
Research Triangle Park, NC





Life Sciences expertise ranging from R+D Labs and BSLs, to today's most complex Biotech, Pharma, and Cell-and Gene-Therapy facilities



Confidential Client Biomanufacturing Facility  
Durham, NC



**Texas A&M University**  
Commerce, TX



**Novo Nordisk**  
Clayton, NC



**Drug Enforcement Administration**  
Miami, FL



**BASF Corporation**  
Research Triangle Park, NC

# VIRTUAL DESIGN + CONSTRUCTION TECHNOLOGY

## RESULTS + BENEFITS

Virtual Design + Construction (VDC) technology enables a better way of delivering capital projects, making informed decisions, enhancing collaboration, and producing more accurate data. It brings clarity + certainty to the most demanding projects through:

- Faster precon cycles to better understand cost + schedule
- Visual planning to support communication
- Reduced field issues through comprehensive modeling
- Reduced schedules due to advanced planning + quality management
- Higher ROIs through technology

### PROJECT DOCUMENTATION + PROJECT MANAGEMENT

#### PROCORE

A construction management platform that provides project stakeholders with easy access to current information. Enhances collaboration by providing a central location for all drawings, RFIs, submittals, and documents, specific to safety, cost control, quality control, and schedule validation.



### TRADE PARTNER SOLICITATION

#### BUILDINGCONNECTED + TRADETAPP

Centralized solution for comprehensive bid solicitation and bid management coupled with a trade partner prequalification tool providing benchmarked contractor financial, capacity, and safety performance reviews to mitigate risk.



### AERIAL DRONE IMAGERY

#### DJI + DRONEDEPLOY

From site selection to ribbon cutting, manage, measure, and monitor projects with drone imagery. Apply technology to create consumable and sharable drone maps, 3D models, and project photos. Utilize advanced aerial photogrammetry to create 3D topography maps providing volumetric analysis for accurate site condition evaluations and measurements.



### JOBSITE PHOTO DOCUMENTATION

#### DRONEDEPLOY GROUND

Use standard and 360° photography to capture jobsite progress photos, track installed work, and communicate with teams. Make meetings more efficient by reviewing up-to-date conditions. Walk the jobsite from your phone, iPad, or laptop. Know exactly what's been installed and where. Share PDFs of floor plans linked with respective progress photography that work completely offline.



### REALITY CAPTURE (LASER SCANNING)

#### FARO

Capture an accurate point cloud to create exact 3D maps of existing conditions, installed work, and as-built conditions. Link point clouds to the project's coordination model to validate design, check floor flatness, verify locations of installed work and equipment, and identify variances. Efficiently correct any issues in the support of overall project quality. Assists with preconstruction, logistics, coordination, installation tracking, and as-built deliverables.



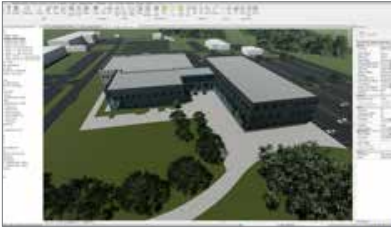


# APPROACH

**PEOPLE** — We have a deep bench of industry-leading, technology-focused experts.

**TECHNOLOGY** — We provide hand-selected software applications customized for each project.

**OPERATIONAL EXCELLENCE** — From preconstruction through construction, we provide a collaborative environment to help plan and drive design and construction decisions through option analysis, financial modeling, and risk management. Throughout the project lifecycle, we provide technology specific to serve each project's unique requirements.



## PROJECT 3D MODELING

### REVIT + INFRAWORKS

Create 3D models for site logistics, planning, and communication. Generate highly detailed virtual mock-ups to test scope detail and validate installation sequences. Produces a detailed digital copy of the project to coordinate systems and resolve issues before field fabrication and installation.



## VISUAL SCHEDULING + LOGISTICS PLANNING

### SYNCHRO

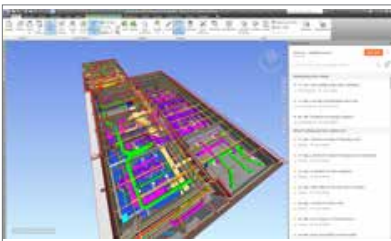
Use project models to create, manage, visualize, and track project schedules. Generate sequence animations, review construction plans, identify opportunities for improvement, simulate construction activities, and optimize project schedules.



## AUGMENTED REALITY (AR) + VIRTUAL REALITY (VR)

### ENSCAPE

Communicate design with greater clarity whether in the office or on a jobsite. Helps teams run QA/QC, find coordination issues, and validate designs through the use of immersive + photorealistic digital environments.



## 3D SYSTEMS COORDINATION + ISSUE MANAGEMENT

### NAVISWORKS

Build your project virtually first, get it right, and then build it in the field. Manage the federated models from designers and subcontractors to identify, track, and report on constructability issues and clashes. Enhances the coordination effort through persistent collaboration focused on identifying real issues and working toward quick, iterative resolutions to safeguard the overall health of the project.



## JOBSITE ENVIRONMENTAL MONITORING

### MODEL-BASED QUALITY CONTROL (MBQC)

Full site, 24/7 monitoring for temperature, humidity, carbon monoxide, VOCs, particulates, noise, light, and pressure. Designed to detect unsafe environmental working conditions and potential risks to installed scope in real time. Drill into data by floor or area, customize reporting, and create custom alerts for your mobile device. Creates a historical record of the conditions of your project.

Building  
award-winning  
facilities for  
notable  
clients

REPRESENTATIVE

## Life Sciences Clients

Alcami

Alexandria Real Estate Equities

American Type Culture Collection

Atsena Therapeutics

BASF

Baxter

Bayer CropScience

Bell Northern Research

Beam Therapeutics

Biogen

bluebird bio

CEL-SCI

CryoLife

CSL Behring

Curia

Diosynth Biotechnology

Drug Enforcement Administration

FUJIFILM Diosynth Biotechnologies

GlaxoSmithKline

ImagineOptix

Invitae

IVAX

King Street Properties

Lilly

Locus Biosciences

Mayne Pharma

Mispro Biotech Services

Medicago

Monsanto Company

North Carolina Department of Health  
and Human Services

Novartis Vaccines and Diagnostics

Novo Nordisk

Novozymes

PCS Health Systems

Pfizer

Reichhold

SCYNEXIS

Seqirus

Syngenta

TEVA

Thermo Fisher

Twin City Bio

VGXI

**Mayne Pharma**  
Greenville, NC



**Locus Biosciences**  
Morrisville, NC

**University of Florida**  
Orlando, FL



**University of North Carolina**  
Chapel Hill, NC





**Building  
Group**

[bekbg.com](http://bekbg.com)

Chicago

Dallas

Greenville

Houston

Research Triangle Park